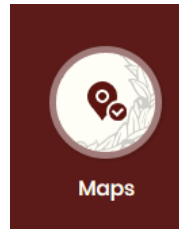
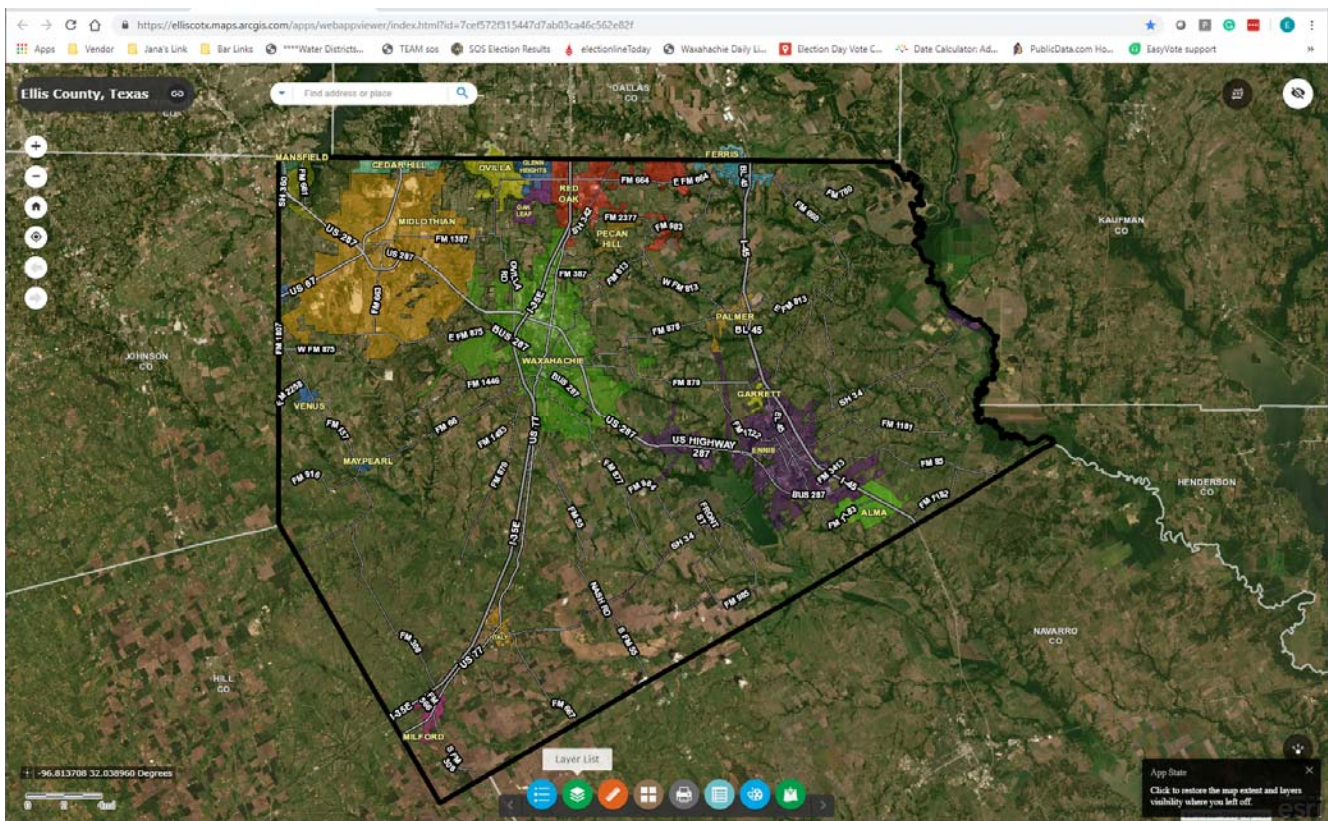


How to look up an Ellis County address to view district layers (Commissioner, Justice of the Peace(JP)/Constable, City, ISD, TCEQ Water, Voting Precincts, etc)

Step 1. Go to the Ellis County website, WWW.co.ellis.tx.us, at the bottom of the page Click on the Maps icon. (Best viewed in Chrome, Internet Explorer not recommended)

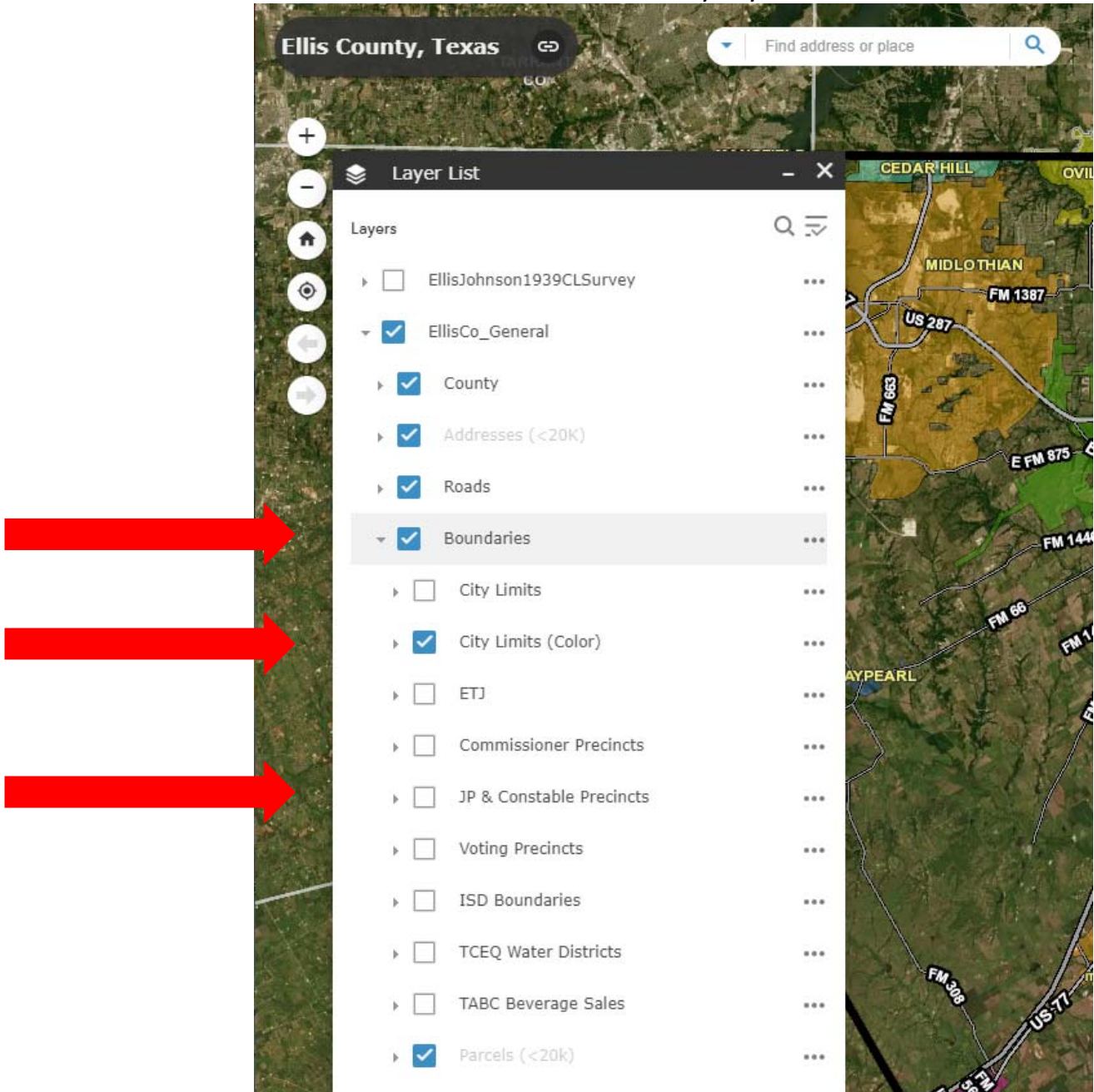


Step 2. Click on “Interactive Web Map”. The below map will appear.



Step 3. At the bottom of the screen, Click on this green icon called “Layer List”.

Step 4. Click on the word “Boundaries”, then de-select “City Limits” check box, and then select “JP & Constable Precincts” or whatever layer you would like to view.



Step 5. Type in the address of the location and make the selection in the drop-down box. The streets data is maintained by the County GIS Department and updated regularly from 911 data.

