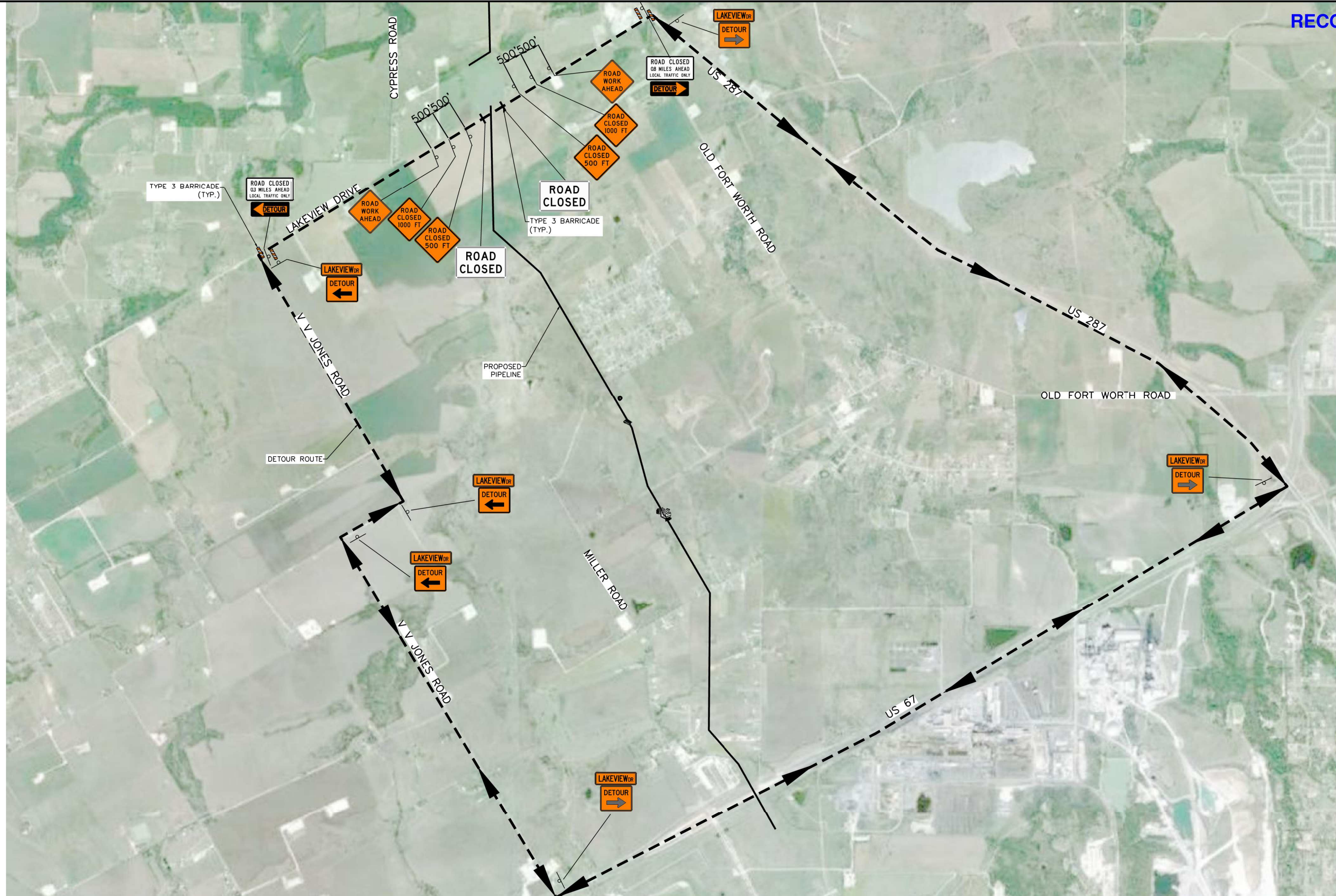
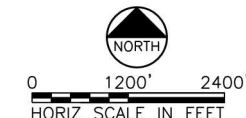


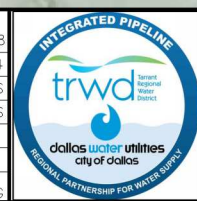
LAKEVIEW DRIVE	
VEHICLES PER DAY	283
TRAFFIC COUNT DATE	2009
NO. OF LANES	2
TMUTCD	TA #11
COORDINATION	ELLIS COUNTY PCT. 4
REFERENCE	NCTCOG



User: P0wen
 C:\pw_working\cnpaw\13\C_SHEETS\13C_-701.dwg LAYOUT: 13C_-701
 Oct 14, 2014 10:24am LTS: 1 TWIST:
 REFERENCES: \STANDARD\TRWD_BORDER.dwg, \BASE\13C_-SPZ1DB.dwg, \BASE\13C_-SPZ1DB.dwg



NO.	ISSUE	BY	DATE	JOB NO.
				172238
			10/10/2014	
				DESIGNED: BDS
				DRAWN: BDS
				REVISD: BDS
				CHECKED: BDS
				FILE NAME: 13C_-701.DWG



TARRANT REGIONAL WATER DISTRICT AND CITY OF DALLAS, TEXAS
INTEGRATED PIPELINE PROJECT
 SECTION 13
 CIVIL
TRAFFIC CONTROL PLAN
LAKEVIEW DRIVE CROSSING



BLACK & VEATCH CORPORATION
 Dallas, Texas - Registration No. F-258

BDS TECHNOLOGIES, INC.
 Dallas, Texas - Registration No. F-4025

THE SEAL THAT ORIGINALLY APPEARED ON THIS DOCUMENT WAS AUTHORIZED BY TAOREED O. BADMUS, P.E. TEXAS NO. 83080. TEXAS ENGINEERING FIRM NO. F-4025 AND APPLIES ONLY TO THE BASELINE DOCUMENT. ALTERATION OF A SEALED DOCUMENT WITHOUT PROPER NOTIFICATION OF THE SEALING ENGINEER IS AN OFFENSE UNDER THE TEXAS ENGINEERING PRACTICE ACT.

RECORD DOCUMENT
 ISSUED ON 10/10/2014

VERIFY SCALE	0 1
Bar is one inch on original drawing. If not one inch on this sheet, adjust scale.	
SHEET	13C_-701
SEQ.	113 OF 169