

The background features a large, faint, circular seal of Ellis County, Texas. The seal contains a central five-pointed star surrounded by a wreath. The words "COUNTY OF ELLIS" are arched across the top, and "STATE OF TEXAS" is arched across the bottom.

Ellis County Economic Relief Grant **(ERG)**

ELLIS COUNTY, TX



Italy

Maypearl

Milford

Oak Leaf

Ferris

Purpose

Ennis

Ovilla

Garret

Glenn Heights

Grand Prai

This grant exists to reduce the burdens on Ellis County citizens and kickstart immediate economic recovery.

Pecan Hill

Red Oak

Waxahachie

Midlothian

Cedar Hill

Bardwell

Alma

Italy

Maypearl

Milford



Overview

On Tuesday, June 30, The Ellis County Commissioners' Court approved the authorization for County Judge Todd Little to sign the certification form of the Coronavirus Relief Fund (CRF) under the Coronavirus Aid, Relief, and Economic Security (CARES) act in the amount of \$3,460,930.00. This funding has supported Ellis County and associated jurisdictions in COVID-19 mitigation efforts.

To reduce the burdens on Ellis County citizens and kickstart immediate economic recovery, on Tuesday, September 22, the Commissioners' Court approved the formation of a citizen comprised committee to review and allocate **\$1 million** of relief funds in the form of grants to three qualifying groups throughout Ellis County.

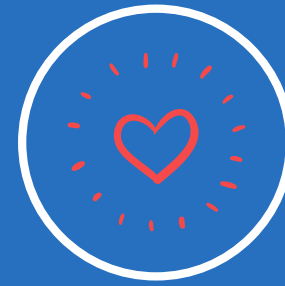


Qualifying Groups



Healthcare

Hospitals, Clinics,
Private Practice,
Dental Offices, and
Nursing & Senior
Care Facilities.



Nonprofits & Social Service Agencies

A 501(C)(3) that
invests in the
community.



Small Businesses

Companies with less
than 50 employees (for
example: salons, gyms or
workout facilities, local
retailers, restaurants,
manufacturers).



Qualifying Expenditures

- Payroll costs for employees or owners draw (sole proprietors/partners)
- Contract Labor
- Supplier payments
- Rent, lease or interest on mortgage payment (for real property used for business purposes, like storefront or warehouse, excluding personal residence)
- Rent, lease or purchase payment for business property (e.g., delivery vehicle; food truck; kitchen equipment; technology, payment, and communications systems and equipment);
- New or expanded technology applications and Wi-Fi services Contract Labor
- Utility payments for business properties, excluding personal residence
- Cost of critical business operations (raw materials, marketing expenses, etc. payments)
- PPE, sanitation supplies and equipment
- Interest on other business debt obligations incurred before March 1, 2020, excluding personal residence



Three Phase Approach

Phase One

Receive applications (including required documentation and specific registration) for ERG.



Phase Two

Review, score, and evaluate eligibility of applicants.



Phase Three

Notify and distribute awarded funds to applicants.



Before You Apply

Upon the submission of an application, every applicant will be required to have read, reviewed, and approved:

- 1. ERG Terms & Conditions**
- 2. Acknowledgement of Responsible Party**
- 3. Memorandum of Next Steps**
- 4. Grant Agreement**

If you have not reviewed the following documents please refrain from filling out the application. You will be required to upload a signed and approved copy of the documents listed above upon the submission of this application. All of the documents described above can be found at co.ellis.tx.us/ERG.



How To Apply

1.

Visit:
co.ellis.tx.us/ERG

2.

Read the documents associated with the application.

3.

Submit an application online.

"Every dollar during this time of crisis makes a difference. Together we will overcome."

- Ellis County Judge Todd Little

